



**OUTBACK
SLEEPERS
VICTORIA**

PRODUCT RANGE

OCTOBER 2022

Adding distinction to **Your** landscape design



PRODUCT RANGE

RETAINING WALL SLEEPERS

LONSDALE



BLACKWOOD



OUTBACK SLEEPERS VICTORIA

63-65 Ordish Road Dandenong South VIC 3175

Tel: (03) 9001 8187

E: info@osv.melbourne

www.osv.melbourne

ASHWOOD



KENSINGTON



PRODUCT RANGE

RETAINING WALL SLEEPERS

HAMPTON



MCLAREN



OUTBACK SLEEPERS VICTORIA

63-65 Ordish Road Dandenong South VIC 3175

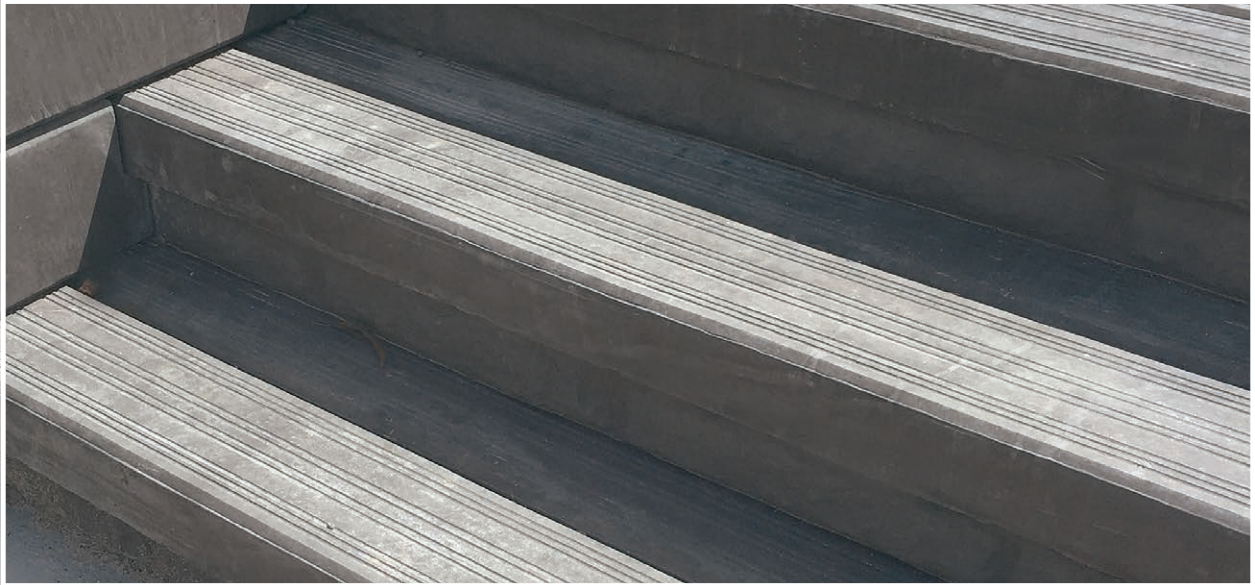
Tel: (03) 9001 8187

E: info@osv.melbourne

www.osv.melbourne

STEP KITS

- Create steps with our matching sleeper treads
- Available in Lonsdale and Blackwood
- Includes steel brackets, step treads, side sleepers and riser



UNDER FENCE PLINTHS

- Grey or charcoal
- 2340mm x 200mm x 50mm

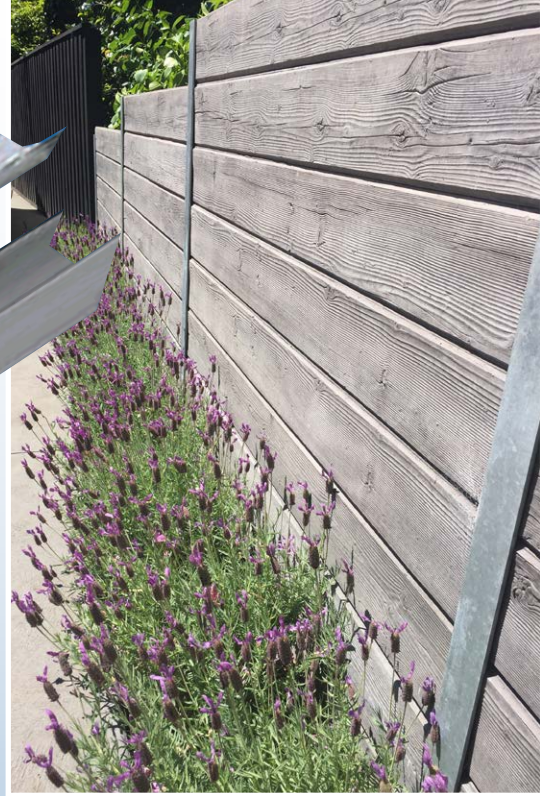


PRODUCT RANGE

STEEL POSTS / SLEEPER GRAB

STEEL POSTS

- 100UC available in selected sizes
- H section and C section
- Hot dipped galvanized for longer life span



SLEEPER GRAB

- Efficiently install sleepers with minimal effort
- Safe handling with reduced fatigue and injury
- Massively reduced labour costs
- 350kg load capacity



OUTBACK SLEEPERS VICTORIA

63-65 Ordish Road Dandenong South VIC 3175

Tel: (03) 9001 8187

E: info@osv.melbourne

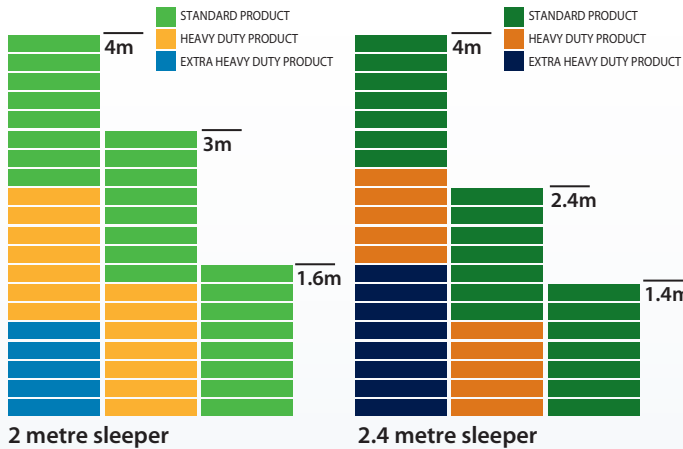
www.osv.melbourne

PRODUCT RANGE

SLEEPER INSTALLATION GUIDE

7

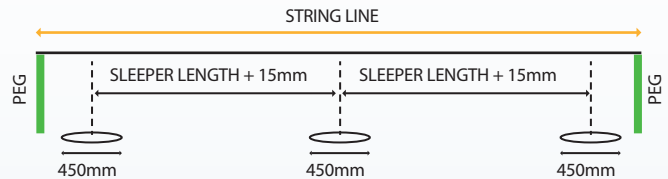
TYPICAL SLEEPER ARRANGEMENT



1 STRING LINE

Set pegs at each end of the retaining wall site and connect with a string line to give the required alignment. Holes should be dug at **2015mm** centres for 2.0m sleepers and **2415mm** centres for 2.4m sleepers.

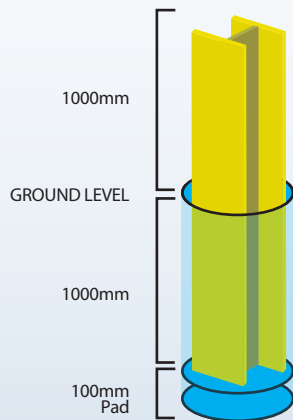
A similar allowance of 15mm can be used for other lengths. Hole diameter must be at least **450mm** for a one metre high retaining wall. If your wall is over one metre high you will need council permission and engineers advice.



2 POST HOLES

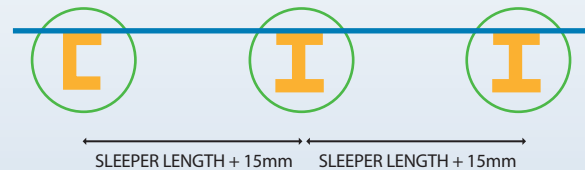
The post holes for a typical 1.0m high wall must be dug at minimum **1100mm** deep, and **450mm** in diameter.

For higher walls, and where permits and council regulations apply, holes will typically be larger, please check with relevant authorities.



3 STEEL PLACEMENT

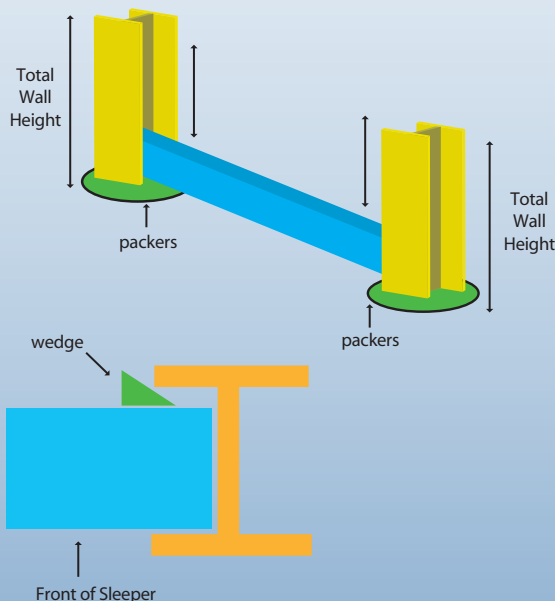
Place steel into recommended size hole, and set at 15mm longer than the sleeper being installed. For example, if you are using a 2.0m sleeper then space the steel uprights at 2015mm inside the channels. Timber props are a good idea at this stage to ensure correct spacing of steel. Ensure the steel is square and straight using level or laser. Once steel is in place, pour concrete into hole ensuring it is covered on all sides and underneath steel by at least 100mm. DO NOT OVER FILL HOLES. Typically concrete should finish at least 10mm below base of bottom of sleeper.



4 SLEEPERS

After the concrete has cured, place first sleeper between steel posts.

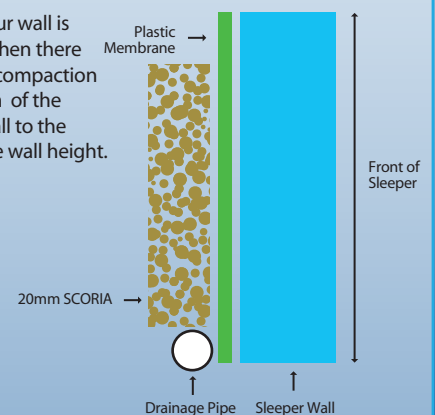
Use packing to adjust level, ensuring each layer is the same distance down from top of steel posts. It is good practice to insert wedges behind each sleeper to guarantee each is held to the front of the steel post.



5 DRAINAGE

Once sleepers have been installed, place plastic membrane behind wall and slotted drain along length running to a discharge point. Cover drain and backfill with 20mm scoria up the height of the wall. Ensure there is no compaction behind the height of the wall.

Example, if your wall is 800mm high then there should be no compaction within 800mm of the back of the wall to the distance of the wall height.



Note: please ensure that during installation no equipment is driven over the wall backfill within the height of the wall. Compaction if any, within this area should be with non vibrating hand equipment weighing no more than 500kg per square metre of footprint. If greater compaction is required please obtain engineering advice. Wall designs shown are for 'typical' soil conditions. Calculations are available on our website. For walls over 1 metre you should seek independent engineering advice based on your specific site conditions.



OUTBACK SLEEPERS VICTORIA

63-65 Ordish Road Dandenong South VIC 3175

Tel: (03) 9001 8187

E: info@osv.melbourne

www.osv.melbourne



ADDING DISTINCTION TO YOUR LANDSCAPE DESIGN.

Outback Sleepers offer the highest quality concrete retaining wall sleepers engineered to achieve wall heights in excess of 4 metres. From larger civil works projects, to landscaping works, and small retaining walls, we have designs to suit every taste and budget.

As a local manufacturer we offer fast turnaround, large quantities of stock, and an efficient delivery service to site. With a network of long term valued contractors, Outback Sleepers have the industry reputation to match and can recommend wall builders suitable for any installation.

WALL DESIGN STANDARDS

For all wall construction and permit requirements, please contact your local authority for details. Typically, walls under 1.0m do not require permits, but may still need to be engineered depending on location. Our sleepers have local building code certification and are designed according to AS 3600-2018 which provides for a minimum 50 year life span.

FACTORY

- ✓ Purpose built facility
- ✓ Technologically advanced for superior quality control
- ✓ Large production capabilities for quick turnaround times.



SLEEPER SIZES

1.8m x 200mm x 75mm	Standard
1.8m x 200mm x 100mm	Heavy duty
2.0m x 200mm x 75mm	Standard
2.0m x 200mm x 100mm	Heavy Duty
2.0m x 200mm x 120mm	Extra Heavy Duty
2.4m x 200mm x 80mm	Standard
2.4m x 200mm x 100mm	Heavy Duty
2.4m x 200mm x 130mm	Extra Heavy Duty
3.0m x 200mm x 110mm	Heavy Duty

Colours may vary marginally to this brochure. Not all designs available in all sizes. Please check availability at time of purchase. Thicknesses may vary with a tolerance of +3mm/ - 1mm. As with all concrete products, sleepers are subject to efflorescence and water staining. Our charcoal products are delivered in plastic wrapping. To maintain optimum colour uniformity of charcoal coloured products, we would recommend plastic covering for 2 weeks if rain is likely.

OUTBACK SLEEPERS VICTORIA

63-65 Ordish Road, Dandenong South, VIC 3175
Tel: (03) 9001 8187 E: info@osv.melbourne
www.osv.melbourne

