

SAFE LOADING PROCEDURES

LOAD CAPACITY

TRAILERS GENERALLY HAVE A COMPLIANCE PLATE WHICH OUTLINES THE SAFE WEIGHT LIMIT (REF. DIAGRAM 1)

If your vehicle and/or trailer cannot safely carry your entire order, please arrange multiple pickups or internal/external courier delivery with Outback Sleepers Sales Staff in our office.

In the event of a trailer having no compliance plate, these guidelines will apply. (REF. DIAGRAM 2)

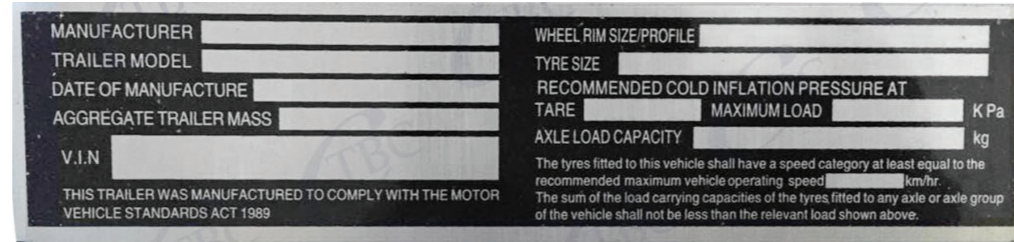


DIAGRAM 1

UNBRAKED TRAILER	BRAKED TRAILER
<p>MAXIMUM 1 PACK ONLY - at forklift operators discretion</p>	<p>MAXIMUM 2 PACKS ONLY - at forklift operators discretion</p>

DIAGRAM 2

LOAD DIMENSIONS

DETERMINE THE LOAD CAN FIT WITHIN THE DIMENSIONS OF THE VEHICLE AND/OR TRAILER WITHOUT OVERHANG (REF. DIAGRAM 4 & 5)

Under no circumstances are sleepers to be placed on top of tailgates or above cabin of vehicle. (REF. DIAGRAM 6)

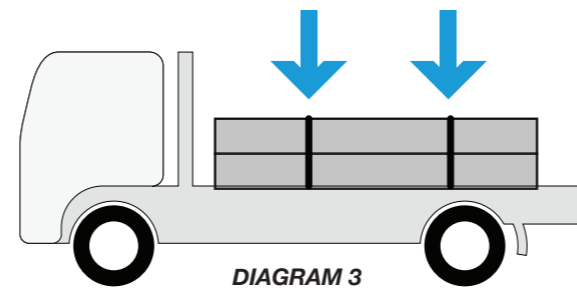


DIAGRAM 3

SECURE YOUR LOAD

ENSURE YOU HAVE THE APPROPRIATE MEANS TO SECURE OR TIE DOWN YOUR LOAD SAFELY (REF. DIAGRAM 3)

Outback Sleepers Victoria will not load any vehicle if the driver cannot confirm they have the appropriate equipment to secure the load safely.

Your load restraints must be in a suitable condition and be able to handle the total capacity of the load.

You may be able to purchase straps from Outback Sleepers Victoria's office.

Each stack (or part) must have 2 tie downs positioned above timber bearers that the sleepers sit on.

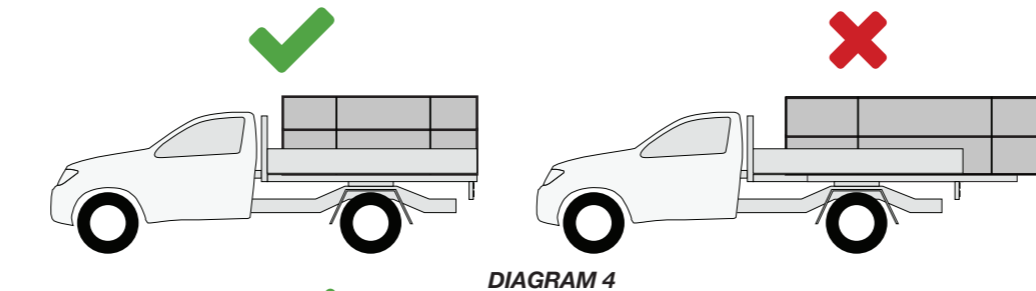


DIAGRAM 4

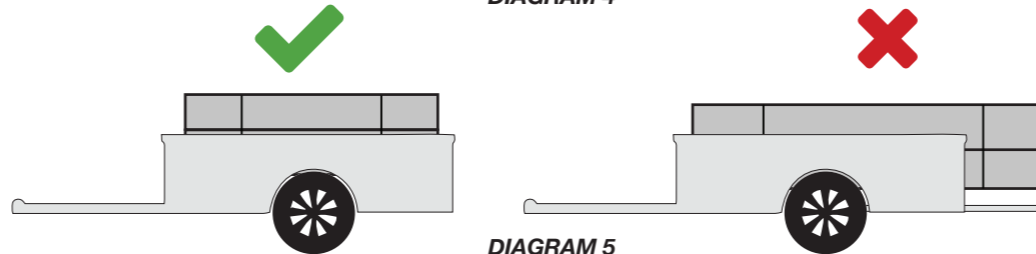


DIAGRAM 5

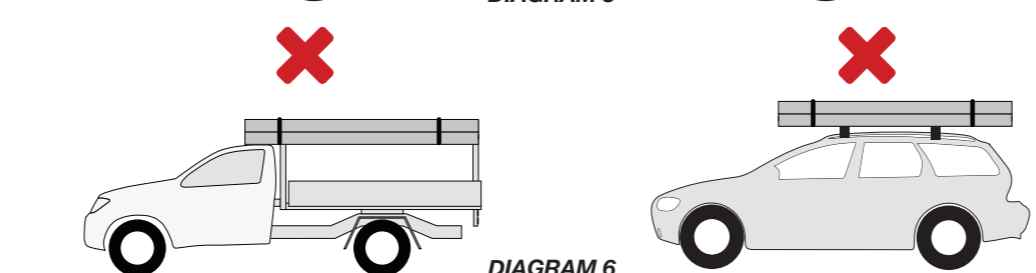


DIAGRAM 6

TOTAL WEIGHT

CONFIRM THE TOTAL WEIGHT OF YOUR DELIVERY. A 2m CONCRETE SLEEPER WEIGHS APPROX. 85 KGS

Factor in other materials stored in vehicle/trailer in addition to the weight of sleepers when determining whether your vehicle and/or trailer has adequate capacity to carry the load.

POSITIONING

OVERHANG CAN ONLY OCCUR IF THE WEIGHT OF THE SLEEPERS IS POSITIONED CORRECTLY (REF. DIAGRAM 4 & 5)

Sleepers must be positioned centrally over the axles of the vehicle/trailer and is secured/tied down appropriately.

If the load does not fit within the dimensions of a trailer, both ends of the trailer gates must be lowered so there is equal overhang at the front and back of the trailer.

EQUIPMENT

ALL VEHICLES, TRAILERS AND TIE DOWN EQUIPMENT MUST BE SUITABLY MAINTAINED AND FIT FOR PURPOSE.

THIS IS THE RESPONSIBILITY OF EACH DRIVER

Outback Sleepers will undertake a visual inspections of the tie down equipment and trailer compliance plates prior to loading sleepers.

It is the responsibility of customer to hand load any sleepers if necessary.